

Single Contingency Assessment and Restoration

Enhance the security of your power system with the contingency assessment module.

Restoration Plan

The analysis simulates the outage at the user-defined location and evaluates all the alternatives to propose a sound switching plan.

The Single Contingency Assessment and Restoration module takes into account the selected restoration mode and restoration priority.

The selection criterion is also defined by the relative importance of different objective functions, such as:

- Minimize the number of switching operations
- Maximize the total load restored
- Maximize feeder spare capacity
- Maximize component spare capacity
- Minimize restoration path

The analysis also respects the following user-defined criteria:

- Maximum equipment loading limits
- Maximum and minimum voltage limits
- Operable switching devices
- Number of backup feeder layers
- Load factors

Satisfying all the user-defined criteria, the Single Contingency Assessment and Restoration module provides the best-suited solution specific to each user's operating conditions.

Meaningful Results

Results are presented in the form of both one-line diagram display and reports.

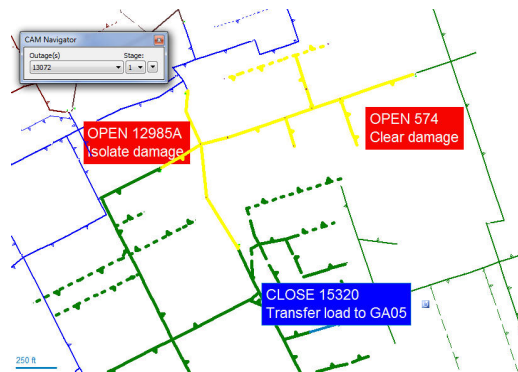
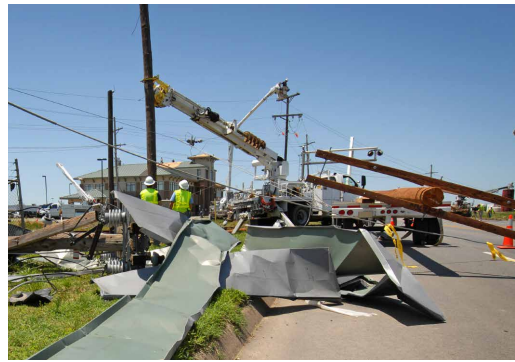
One-line diagram display includes:

- Navigator to display the post-contingency network status and switching plan for each single-contingency scenario in a batch mode simulation
- Color-coding to show outage location, restored sections, un-served area and isolated sections
- Color-coding to show switching operations
- Tags to show information on the switched devices

Reports include:

- Detailed report for each contingency, listing the proposed switching plan, the load restoration and the area left un-served
- Report listing the weak points in the network which would be overloaded when a switching operation is attempted

The information available helps engineers study multiple what-if scenarios, to understand the security of the system, and to be better prepared for undesired service interruption.



Eaton
1000 Eaton Boulevard
Cleveland, OH 44122
United States
Eaton.com

CYME International T&D
1485 Roberval, Suite 104
St. Bruno, QC, Canada J3V 3P8
P: 450.461.3655 F: 450.461.0966
P: 800.361.3627 (Canada/USA)
CymelInfo@eaton.com
www.eaton.com/cyme

© 2015 Eaton All Rights Reserved
Printed in Canada
Publication No. BR 917 008 EN
November 2014

Eaton is a registered trademark.

All other trademarks are property of their respective owners.

Follow us on social media to get the latest product and support information.

